



環球水泥股份有限公司
Universal Cement Corporation



環球水泥股份有限公司
Universal Cement Corporation

10485 台北市南京東路二段125號10樓
TEL:02-2507-7801 FAX:02-2506-7580

since 1960



www.ucctw.com

創新與傳承 ■ 綠色新環球

Green is the new UCC

UNEO

勤
儉
誠
信

穩
健
踏
實

沿 革

Brief History ----- 2

組織系統

Organization System ----- 6

國內水泥業務部

Cement Division ----- 8

混凝土業務部

Ready Mix Concrete Division ----- 10

建材事業部

Building Materials Division ----- 12

電子事業部

Microelectronics Division ----- 14

公司、工廠(場)及營業單位地址

Address and Telephone for Head Office,
Plants and Warehouses ----- 16

主要轉投資事業、關係企業

Main industries through Transfer investment
and Affiliated Company ----- 17

本公司於民國48年9月，由吳三連先生、侯雨利先生在台南新復興布行發起籌組，民國49年3月依法奉准設立。創設以來，即以「勤儉誠信、穩健踏實」為企業理念，一步一腳印，謹慎經營，現已發展為建築材料集團，事業觸角延伸至科技、營建、金融、汽車零件及運輸等多元領域。

民國49年，選定高雄大崗山為採石礦區及擇定高雄市路竹區，設立本公司第一座水泥廠。民國62年，政府積極推動十項建設，民間建築業興盛，對水泥需求增加，本公司另擇定高雄市阿蓮區，設立第二座水泥廠。

配合政府推動各項品質提升計畫，本公司之水泥產品已獲 ISO9001 的國際品質認證及經濟部商品檢驗局認可登錄，充分供應國內外市場需要。

民國65年，本公司引進自動控制及自動計量之預拌混凝土設備，轉投資第一座預拌混凝土場，垂直整合水泥上下游產業。歷經40年發展，不斷提升預拌混凝土品質及產能，迄今已有7個直屬預拌混凝土工場，及1個轉投資專業混凝土公司。



■ 創辦人侯雨利先生參與建廠活動

■ 大湖水泥廠



■ 阿蓮水泥廠



■ 環球混凝土工業(股)公司



■ 台南預拌混凝土場

The Corporation was founded in Hsin-Fu Hsin cloth shop by the joint effort of Mr. S.L Wu and Mr. Y.L Hou in September 1959 and was approved in March 1960 legally. Since its founding, the Corporation has adhered to three basic principles of prudence, honesty and moderation. Through 50 years of diligent and punctilious management, the Corporation enjoys being one of the most recognizable brands in Cement and Building Materials industry in Taiwan. Besides the above operation in cement and building material, the Corporation also engaged in diversified operation, including technology, construction, bank, auto parts and transportation, etc.

In 1960, Ta-Kang Mountain of Kaohsiung Hsien was selected to be the quarrying area and Luh-Chu District, Kaohsiung City was selected to establish the first cement plant of the Corporation. In 1973, the government actively promoted the Ten Major Construction

Projects which resulted in a remarkable growth in construction industry. Consequently, the demand of cement was sharply increased. The Corporation decided to build another cement plant.

Now, the cement products of the Corporation have been approved by the Bureau of Commodity Inspection & Quarantine, Ministry of Economic Affairs by acquiring the confirmation approval registration of ISO 9001.

In 1976, the Corporation established the first premixed concrete plant to vertically integrate the cement business. So far, the Corporation currently operates seven premixed concrete plants and one concrete companies through transfer investment.

民國78年，響應政府維護公共安全政策，以及提升民間居住品質，投資設立國內第一座石膏板工廠，大規模專業生產防火建材石膏板。本公司使用德、日等國製造之精密設備，全自動化一貫生產作業，成品除符合台灣CNS、美國ASTM等質量標準，亦通過 ISO9001 國際品質、綠建材、美國UL以及英國BS高優質防火等認證。目前本公司持續加強石膏板品質及性能，研發以健康、環保綠建材為訴求之產品，以落實企業、社會及環境永續發展之目標。

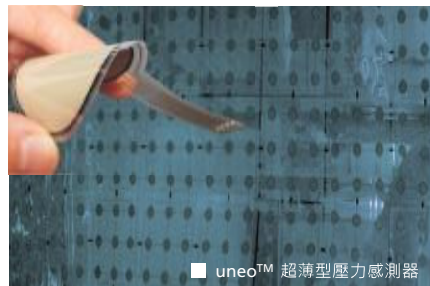


■ 海湖石膏板廠

本公司現有員工3百餘人，資本額新台幣60餘億元，發展已漸臻規模。積極拓展建築材料、科技事業外，並致力於多角化經營，事業觸角延伸至營建、金融、汽車零件及運輸等領域，現已有20多家轉投資公司，奠定企業集團化規模。

目前本公司在董事長侯博義先生組成的經營團隊領導下，持續引進新的經營理念；對內積極推動現代化管理，強化企業體質；對外期許能以建材、科技專業為軸心，多元經營，並與「勤儉誠信、穩健踏實」傳統經營理念相結合，傳承綿

本公司除水泥、預拌混凝土及石膏板建材外，鑑於軟性電子勢必帶領人類生活進入嶄新的領域，民國99年1月，與工業技術研究院簽署專屬授權移轉合約，取得超薄型壓力感測器技術，成立電子事業部，正式跨足高科技領域。本公司在軟性電子以研發與製造為核心能力外，並跨領域結合軟體設計、娛樂創意、建築工藝等軟實力，開發全新的人機互動經驗，創造美好未來生活願景。



■ uneo™ 超薄型壓力感測器

延，永續經營。

In 1989, in response to the government to maintain public safety policy, and enhance the quality of private residence, investment in the establishment of the first domestic gypsum board factory, large-scale professional production of fireproof building materials gypsum board. The company uses Germany, Japan and other countries of the precision equipment, fully automated production operations consistent, in addition to Taiwan in line with CNS, ASTM and other quality standards, but also through the ISO9001 international quality, green building materials, the United States UL and British BS high-quality fire certification . At present, the company continued to strengthen the quality and performance of gypsum board, research and development to health, environmental protection, green building materials for the demands of the product, to implement corporate, social and environmental sustainability goals.

The Company in addition to cement, ready-mixed concrete and gypsum board building materials, In view of the soft electronics is bound to lead the human life into a new field, in January 2010, and the Industrial Technology Research Institute signed the exclusive transfer of the contract, to obtain ultra-thin pressure sensor technology, the establishment of electronic business, officially set foot high Science and technology. The company in the soft electronic R & D and manufacturing as the core capabilities, and cross-sectoral integration of software design,

entertainment, creativity, construction technology and other soft power, the development of new human-computer interaction experience and create a better future vision of life.

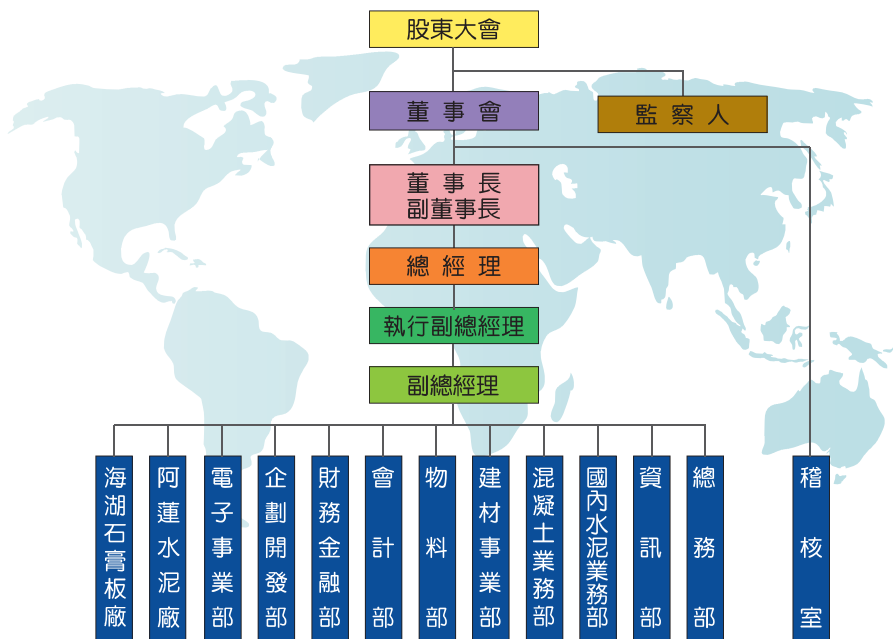
The company's existing staff of more than 300 people, capital NT 60 billion yuan, the development has gradually Zhen scale. And actively expand the building materials, science and technology, and is committed to diversified operations, the cause of the tentacles extended to the construction, finance, auto parts and transportation and other fields, is now more than 20 investment companies to lay the scale of enterprise groups.

Under the new leadership of Mr. B.Y Hou, the Corporation seeks to become the leading building materials solution provider in Taiwan. While adhering to the founding principles, the company also seeks to manufacture innovative products that are both eco-friendly and also contribute to the sustainable development of our environment. In the future, the Corporation will keep on its continued development and endeavor in quality oriented corporate culture for prolonged extension and perpetual operation.

本公司總公司位於台北市，設有總務部、資訊部、稽核室等11個部室。工廠有阿蓮水泥廠、海湖石膏板廠；混凝土業務部於中南部設立7個專業混凝土場；建材事業部則分別在北、中、南各設有營業所；民國99年成立之電子事業部設立於新北市中和區與高雄市路竹區。

The head office of the Company is located in Taipei City. Under it, there are General Affairs Department, Purchase Department, Financial Department, Planning & Development Department, Audit Office. The plants include

Ah-Lien Cement Plant. Hai-Fu Gypsum Board Plant, Ta-Fu RMC Plant, Nan-Zih RMC Plant, Tainan RMC Plant, Yong-Kang RMC Plant, Fong-shan RMC Plant, Hsiao-Kang RMC Plant, Chao-Jhou RMC Plant. Besides, Gypsum Board and its related material products warehouses are also established in Taipei, Taichung, Tainan, Kaohsiung respectively. In 2010, the establishment of the Electronics Division was established in New Taipei City and Kaohsiung City.



國內水泥業務部 民國49年，本公司選定高雄市大崗山為採礦區，設立第一座大湖水泥廠。民國62年，配合政府積極推動十項建設，對水泥需求量增加，另擇定高雄市阿蓮區，設立第二座阿蓮水泥廠。歷經50餘年發展，不斷提升水泥品質及產能。

混凝土業務部 為跟隨預拌混凝土業務發展之時代腳步，自民國77年起，採用最新電腦控制操作系統之設備，設立第一座大湖預拌混凝土場，發展迄今已有7個直屬預拌混凝土場，及轉投資專業混凝土公司，成功垂直整合水泥上下游產業。

建材事業部 民國78年，響應政府維護公共安全政策，斥資設立國內第一座石膏板廠，生產防火建材石膏板。本廠使用德、日等國製造之精密生產設備，自動化一貫連續作業，成品符合台灣CNS、美國ASTM等質量標準，並通過ISO9001國際品質認證、綠建材認證，更獲得美國UL、英國BS高優質防火認證。

電子事業部 民國99年1月19日，本公司與工業技術研究院簽署專屬授權移轉合約，取得超薄軟性觸感測核心理技術，並成立電子事業部，正式跨足高科技領域。陸續榮獲2010年華爾街日報科技創新獎、2015年Edison Award金牌獎。

Cement Division

The first cement production line of Universal Cement Corporation was built in Luh-Chu District, Kaohsiung City in 1960, using the quarries from the hills of Da Gang Shan. A second production line was built in 1973 at

nearby Ah-Lien township to fulfill the increase in cement consumption due to the rapid development taking place Southern Taiwan. Today, with the Ah-Lien plant still in operation, we continue to serve the Southern Taiwan community .

Ready Mix Concrete Division

Universal Cement Corporation currently operates seven RMC batch plants and two reinvestment batch plants in Central and Southern Taiwan. From Taichung to Tainan, Kaohsiung and Pingtung, the corporation has been a popular choice for construction contractors, hailed for its quality control and excellent services.

Building Materials Division

Since 1991, the Universal Cement Corporation has been the leading brand in the drywall industry, providing consumers with fire-proof gypsum board panels. The corporation currently operates the sole gypsum board production line in Taiwan and has attained numerous certificates of quality including the Taiwan's CNS, United States' ASTM and UL and Great Britain's BS certificates.

Microelectronics Division

In 2010, 50 years since the founding of Universal Cement Corporation introduced the Micro-Deformable Piezoresistive Sensor Technology named "Uneo™", marking a watershed in the history of the company and the commencement of a new start.



阿蓮水泥廠於民國65年10月完成建廠，採西德 Polysius 公司所製最新懸浮式預熱旋窯，年產能80萬公噸。民國72年5月為降低能源消耗，將燃油系統更改為燃煤系統。

自民國75年起，政府頒行新環保法令，本公司即投資購買防制空氣污染設備，累積至今已投資新台幣1億5千萬元以上，且於84年10月獲得經濟部商品檢驗局 ISO 9002 品保認證，目前已取得 ISO 9001：2015 認證。

Ah-Lien Cement Plant was completed in construction in October 1976, by adopting the N.S.P. Kiln system of Polysius Co. of Germany, with annual capacity at 800,000 metric tons. In May 1983, in order to reduce energy

consumption, the fuel oil system was changed to be fuel coal.

Since 1986, the government promulgated new Environmental Protection Act and the Company invested in procurement of equipment for air pollution protection. Accumulated investment amount so far has been more than NT\$ 150 million. The cement plants has Inspection & Quarantine the confirmation approved registration of ISO 9002 in October 1995, has achieved ISO 9001: 2015 Certification.

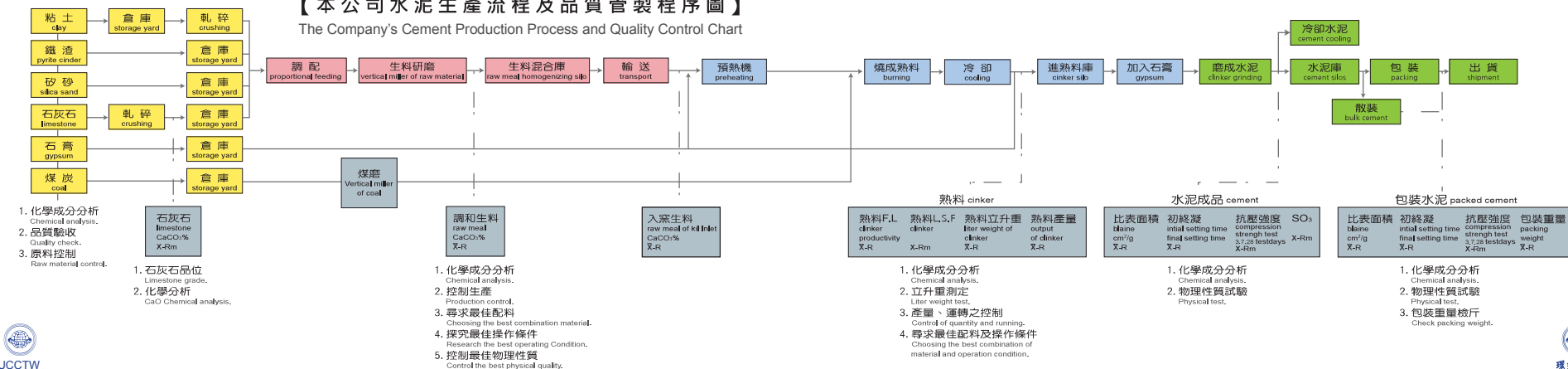


本公司水泥品質與美國、英國、中華民國水泥規範對照
The quality specifications of UCC Portland Cement compares with ASTM,BSS,CNS.

項目 Item		環球水泥 UCC Test Result Type1	美國 ASTM C150-94B Standard Spec.Type1	英國 BSS 12 Part2: 1991	台灣國家標準 CNS61_R2001	
化學分析 Chemical Analysis	燒失量 Ignition Loss(%)	1.00	Max.3.0	Max.3.0	Max.3.0	
	不溶質 Insoluble Matter(%)	0.15	Max.0.75	Max.1.5	Max.0.75	
	氧化矽 SiO ₂ (%)					
	氧化鋁 Al ₂ O ₃ (%)					
	氧化鐵 Fe ₂ O ₃ (%)					
	氧化鈣 CaO(%)					
	氧化鎂 MgO(%)	2.80	Max.6.0	Max.5.0	Max.6.0	
	三氧化硫 SO ₃ (%)	2.45	C/A ≤ 8Max.3.0 C/A > 8Max.3.5	C/A ≤ 5Max.2.5 C/A > 5Max.3.0	C/A ≤ 8Max.3.0 C/A > 8Max.3.5	
	未化驗成分 Undetermined(%)					
	總計 Total(%)					
石灰飽和率 Lime Saturation Factor			Max.1.02 Min.0.66			
物理試驗 Physical Test	細度 Fineness	比表面積 (M ² /kg)Blaine surface	320	Min.280		Min.280
		(M ² /kg)Specific surface			Min.255	
	固定 Soundness	高壓蒸氣法 (%)Autoclave	0.17	Max.0.80		Max.0.80
		膨脹法 (mm)Expansion in Lechatelier Test			Max.10	
	凝結時間 Setting Time	正常稠度 (%)Normal Consistency				
		初凝 (時分) Initial Set(Hr-min)	3-20	Min.1-00	Min.0-45	Min.1-00
	強度 Strength	耐壓 (磅/平方吋) Compression Test(lb/in ²) Mortar Cubes	3days: 3000 7days: 4050 28days: 5200	Min.1740		Min.1800 Min.2800 Min.4000
		耐壓 (牛頓/平方毫米) Compression Test(N/mm ²) Mortar Cubes	2days: 21.5 7days: 28.5 28days: 36.5		Min.16	Min.32.5

【本公司水泥生產流程及品質管製程序圖】

The Company's Cement Production Process and Quality Control Chart



永康預拌混凝土場 於民國88年10月營運，位於台南市永康區永康工業區內，主要生產設備採用雙軸水平式拌合機，產能3m³/分，兩套每年可供應混凝土60萬立方公尺。

台南預拌混凝土場 於民國89年9月營運，位於台南市安平工業區內，主要生產設備採用雙軸水平式拌合機，產能3m³/分，民國100年整建另一套雙軸水平式拌合機，產能3m³/分，兩套每年可供應混凝土60萬立方公尺。

大湖預拌混凝土場 於民國77年8月完成建廠，位於高雄市路竹區，主要生產設備採用雙軸水平式拌合機，產能3m³/分，每年可供應混凝土30萬立方公尺。

楠梓預拌混凝土場 於民國82年11月完成建廠，位於高雄市燕巢區，主要生產設備採用雙軸水平式拌合機，產能4.5m³/分，民國105年增建另一套雙軸水平式拌合機，產能3m³/分，兩套每年可供應混凝土65萬立方公尺。

鳳山預拌混凝土場 於民國99年8月營運，位於高雄市大寮區，主要生產設備採用雙軸水平式拌合機一套，產能3m³/分，每年可供應混凝土30萬立方公尺。

小港預拌混凝土場 於民國71年3月完成建廠，位於高雄市小港區，原為子公司高雄混凝土工業股份有限公司，民國98年9月轉換為本公司一混凝土場，主要生產設備採用雙軸水平式拌合機兩套，產能分別為4.5m³/分及2m³/分，兩套每年可供應混凝土50萬立方公尺。

潮州預拌混凝土場 於民國81年1月營運，位於屏東縣潮州鎮，原為子公司高雄混凝土工業股份有限公司之一場，民國98年9月轉換為本公司一

混凝土場，主要生產設備採用雙軸水平式拌合機兩套，產能分別為3m³/分及2m³/分，每年可供應混凝土46萬立方公尺。

上述7場預拌混凝土場，均係本公司直屬單位，皆經 ISO 9001：2015 認證通過，另有轉投資專業混凝土公司－環球混凝土工業股份有限公司，遍及中南部各重要據點，各廠（場）無論是本公司直屬工場或轉投資成立之混凝土公司，其產製之混凝土皆採用最新電腦控制系統操作，準確度極高，記憶配比計量精確，列表機與計量系統同步生產操作，全由電腦自動控制，重視品質信譽，顧客有口皆碑。

■ 大湖預拌混凝土場



■ 永康預拌混凝土場



■ 小港預拌混凝土場



In October 1999, Yong-Kang RMC Plant was established in Yong-Kang Industrial Park, Tainan City. The main production equipment is two-axis horizontal mixer, with 3m³ per minute. The annual supply volume of two production equipments is 600,000 cubic meter.

In September 2000, Tainan RMC Plant was established in An-Ping Industrial Park, Tainan City. Two-axis horizontal mixer was applied as the main production equipment, with capacity of 3m³ per minute. In 2011, for supplying the construction work in Tainan area, the second set of two-axis horizontal mixer was installed, with capacity of 3m³ per minute. The annual supply volume of two production equipments is 600,000 cubic meter.

In August 1988, the construction of Da-Hu RMC Plant was completed in Lu-Zhu District, Kaohsiung City. The major production equipment is two-axis horizontal mixer, with capacity of 3m³ per minute and 300,000m³ annual supplies.

In order to comply with the requirement for developing Kaohsiung urban area, Yen-Chao District, Kaohsiung City, was selected to be the location of Nan-Zi RMC Plant and the Plant was established in November 1993. The major production equipment is two-axis horizontal mixer, with capacity of 4.5m³ per minute. In 2016, for supplying the construction work in Kaohsiung area, the second set of two-axis horizontal mixer was installed, with capacity of 3m³ per minute. The annual supply volume of two production equipments is 650,000 cubic meter.

In August 2010, Feng-shan RMC Plant was established in Feng-shan District, Kaohsiung City. Two-axis horizontal mixer was applied as the main production equipment, with capacity of 3m³ per minute and 300,000m³ annual supplies.

In March 1982, Xiao-gang RMC was established in Xiao-gang Dist., Kaohsiung City, which was one of the subsidiaries of Kaohsiung Concrete Industry.

In September 2009, Xiao-gang RMC Plant merged with Universal Cement Corporation (UCC). Two sets of two-axis horizontal mixers were applied as the main production equipments, with capacity of 4.5m³ per minute and 2m³ per minute. The annual supply volume of two production equipments is 500,000 cubic meter.

In January 1992, Chao-Zhou RMC was established in Chao-Zhou Township, Ping-Tung County, which was one of the subsidiaries of Kaohsiung Concrete Industry.

In September 2009, Chao-Zhou RMC Plant merged with Universal Cement Corporation (UCC). Two sets of two-axis horizontal mixers were applied as the main production equipments, with capacity of 3m³ per minute and 2m³ per minute. The annual supply volume of two production equipments is 460,000 cubic meter.

The above 7 premixing concrete plants are all the direct subsidiaries of the Corporation and qualified with ISO 9001 in 2015. There are specialized concrete companies through indirect investment, respective as Universal Concrete Industrial Corporation, spread over all major locations in central and southern Taiwan. For each plant, no matter as direct subordinated plant to the Corporation or as a concrete company through indirect investment, its manufactured concrete is generated from the latest computerized system, with extremely high accuracy and punctual ratio memory. Printer and quantitative systems are in synchronized production operation, fully under computer auto control, with concern on quality reputation, and highly praised by customers.



■ 海湖石膏板廠

為了提昇居住的品質與安全，並符合現代社會的需求，本公司於民國78年斥資新台幣4億5千萬元，在高雄市路竹區興建全國第一座大規模的大湖石膏板廠，並引進日本小野田工程顧問公司最新製造技術，生產符合國家CNS標準、美國ASTM與日本JIS標準的石膏板。該廠於民國80年2月運轉，年產能9百萬平方公尺，因市場需求，業已於94年移設越南。

由於石膏板市場需求量之日趨成長，於民國82年投資新台幣17億元，擇定桃園縣蘆竹鄉海湖村增設第二座石膏板廠。亦引進日本小野田工程顧問公司最新製造技術，於民國84年3月完成建廠，年產能為2千萬平方公尺。環球石膏板產品品質優良，符合台灣CNS、美國ASTM等標準，並通過ISO 9001國際品質認證、CNS正字標記認證及綠建材標章認證，部份產品獲得UL認證。

In order to upgrade residential quality and safety and comply with demand of modern society, the Corporation invested NT\$ 450 million in 1989 to construct the first national large-scale Ta-Fu Gypsum Board Plant in Luh-Chu District of Kaohsiung City by adopting the advanced

production technology of Onoda Engineering Consultant Company of Japan to manufacture Gypsum Board conforming to national CNS standard and American ASTM and Japanese JIS standards. The said plant started operation in February 1991. Its annual capacity is 9 million square meters, already quitted production since end of 2001 due to demand situation, and been moved to Vietnam in 2005.

Since the demand volume in the gypsum board market has grown day after day, in 1993, the Corporation again invested NT\$ 1.7 billion in Hai-Fu Village of Lu-Chow Hsiang, Taoyuan Hsien to establish the 2nd gypsum board plant. The advance production technology of Onoda Engineering Consultant Company of Japan was introduced. The construction of Hai-Fu Gypsum Board Plant was completed in March 1995 with annual capacity of 20 million square meters. It manufactures excellent gypsum boards conforming to national CNS standard and American ASTM. The gypsum boards are also certified with ISO 9001, Taiwan CNS, Green Building Material and American UL.

環球石膏板種類及規格 Universal Gypsum Board						
單位：mm						
種類 Type	符號 Symbol	耐燃性 Incombustibility	厚度(mm) Thickness	寬度(mm) Width	長度(mm) Length	適用範圍 Application
普通石膏板 Regular Gypsum Board	GB-R	耐燃一級 Grade No. 1	9	915	1830	適用於乾燥場所之隔間或天花板。 Applicable to dry area for partitions and ceiling.
				1220	1830、2440	
			12	915	1830	
				1220	1830、2440	
強化石膏板 Fire-Resistant Gypsum Board	GB-F		15	1220	1830、2440	適用於電梯間及各種水電管路間，配合CH型立柱及埋槽鐵單面施工，為省時、經濟之工法。 Applicable to elevator shafts, stairwalls and mechanical shafts. Time-saving, economic construction method with the CH stud and J runner single-sided construction.
			12	1220	1830	
			15	1220	2440	
強化(管道)石膏板 Fire-Resistant Gypsum Shaftliner Board	GB-F		19	1220	1830	適用於乾燥潮濕場所之隔間或天花板。 Applicable to wet areas for partitions and ceiling.
強化(防潮+鉛箔)石膏板 Foil-Backed Gypsum Sheathing Board	GB-F(S)	25.4	608	2440		
防潮石膏板 Gypsum Sheathing Board	GB-S	耐燃一級 Grade No. 1	9	915	1830	適用於乾燥潮濕場所之隔間或天花板。 Applicable to wet areas for partitions and ceiling.
				1220		
			9.5	1220		
			12			
壓花系列天花板 Face-Embossing Ceiling Panels	GB-D		9	603	603	適用於明架天花板系統 Applicable to the suspended ceiling

綠建材標章 Green Building Material

- 健康綠建材標章
Healthy Green Building Material
- 再生綠建材標章
Recycling Green Building Material

品質認證 Quality Certification

- 正字標記
Chinese National Standards Mark (CNS Mark)
- ISO 品質管理系統認證
ISO Quality Management System Certification

防火認證 Fire Certification

- 通過 CNS、UL、BS 建築物構造耐火試驗
Comply with the CNS, UL, BS standard fire resistance test for construction of building
- 內政部建築新技術、新工法新設備及新材料審核認可
Audit to obtain Ministry of the Interior R.O.C. approved the building construction of new technology, new construction methods, new equipment and new materials notice



軟性電子具有輕薄短小及可撓曲等特性，能提供消費者更人性化、行動化與個人化的智慧型電子產品。民國99年1月，本公司與財團法人工業技術研究院簽署專屬授權技術移轉合約，取得超薄型壓力感測器技術，並成立電子事業部，正式跨足軟性電子領域。

本公司將此技術命名為Uneo，意涵為無所不在的創新技術。Uneo超薄型壓力感測器應用領域包含：手持式裝置、重量/壓力量測設備、家電產品、教育用品、車用領域等。本公司針對不同的應用需求，提供客製化產品、模組設計及製造等全方位的專業服務，協助客戶縮短產品開發時程。

In January 2010, UCCTW adds Uneo™ ultra-thin pressure sensor technology to its product lineup through a technology transfer agreement with Industrial Technology Research Institute (ITRI), Taiwan. The highly versatile form factor and green manufacturing process allows once cumbersome force-sensing and pressure-mapping methods to take place virtually everywhere. Through the establishment of the Microelectronics Division and manufacturing

facility in Zhonghe District, New Taipei City, the company is now servicing customers all over the world.

The brand "Uneo™" derives from the amalgamation of the Greek root "neo" and "universal" or "ubiquitous," and with this technology UCCTW has helped its customers add unprecedented features in its products. Uneo™ ultra-thin sensor can be easily customized for various consumer appliances and industrial instrumentations, including portable electronics, measurement, home appliance, education, toy and automotive. The Corporation aims to offer not only high-quality sensor manufacturing service, but also product module design and consultation support to shorten your product design cycles.

本公司Uneo超薄型壓力感測器，由於在技術表現上極具特色、應用範圍廣泛、穩定性佳，接連獲得國際肯定：2010年8月榮獲華爾街日報半導體類全球科技創新獎、2011年3月SGS ISO 9001-2008品保認證、2015年4月Edison Awards 金牌獎、2015 R&D 100 IT/Electrical。

Uneo sensor technology received the prestigious Wall Street Journal Technology Innovation Award in 2010 semiconductor category for its versatility and performance, has also been certified by SGS ISO 9001-2008. UNEO also won gold prize for 2015 Edison Award, material science category.



技術規格 / Standard Specification	
受力電阻值變化範圍 / Readout Type	1kΩ~100kΩ
壓力範圍 / Pressure Range	0.01~300 psi (customizable)
線性度 / Linearity	R ² > 0.99 in operating range
操作溫度 / Service Temperature	-40°C~75°C或更高 (or higher)
反應速度 / Response Time	< 100μs
元件厚度 / Thickness	0.2~0.3mm
使用壽命 / Lifetime	大於1千萬次 (> 10 million actuations)



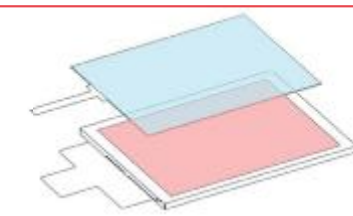
■ 生醫應用 Biomedical Application



■ 辦公室應用 Office Work



■ 電競鍵盤 Gaming Keyboard



■ 工業領域 Industrial



公司、工廠(場)及營業單位地址

Address and Telephone for Head Office, Plants and Warehouses

主要轉投資事業、關係企業

Main industries through Transfer investment and Affiliated Company

總公司 Head office

台北市中山區南京東路二段125號10樓
10F., No.125, Sec. 2, Nanjing E. Rd., Zhongshan Dist., Taipei City 104, Taiwan
電話：(02)2507-7801 傳真：(02)2507-5870

台南辦事處 Tainan office

台南市中西區永福路二段83號6樓
6F., No.83, Sec. 2, Yongfu Rd., West Central Dist., Tainan City 700, Taiwan
電話：(06)228-7123 傳真：(06)229-6600

建材事業部

Building Materials Division

北部營業所

台北市中山區南京東路二段125號10樓
10F., No.125, Sec. 2, Nanjing E. Rd., Zhongshan Dist., Taipei City 104, Taiwan
電話：(02)2507-7801#177 傳真：(02)2506-7580

中部營業所

台中市西屯區文心路二段201號5樓之6
5F.-6, No.201, Sec. 2, Wenxin Rd., Xitun Dist., Taichung City 407, Taiwan
電話：(04)2258-5180 傳真：(04)2258-5190

南部營業所

高雄市新興區中山一路200號11樓之1
台南市中西區永福路二段83號6樓
11F.-1, No.200, Zhongshan 1st Rd., Xinxing Dist., Kaohsiung City 800, Taiwan
6F., No.83, Sec. 2, Yongfu Rd., West Central Dist., Tainan City 700, Taiwan
電話：(07)235-1171 · (06)229-5099
傳真：(07)235-1173 · (06)229-6600

海湖石膏板廠

桃園市蘆竹區海湖里海山中街18號
No.18, Haishan Central St., Luzhu Dist., Taoyuan City 338, Taiwan
電話：(03)354-3056 傳真：(03)354-1711

石膏板研究發展小組

高雄市路竹區甲南里環球路461-2號
No.461-2, Huanqiu Rd., Luzhu Dist., Kaohsiung City 821, Taiwan
電話：(07)696-2133 傳真：(07)697-1898

水泥·混凝土事業部

Cement · Premixing Concrete Division

阿蓮水泥廠

高雄市阿蓮區崗山里崗山95-2號
No.95-2, Gangshan Rd., Gangshan Dist., Kaohsiung City 820, Taiwan
電話：(07)631-2111 傳真：(07)631-2117

台南預拌混凝土場

台南市南區中華西路1段59號
No.59, Sec. 1, Zhonghua W. Rd., South Dist., Tainan City 702, Taiwan
電話：(06)291-7731 傳真：(06)291-7641

永康預拌混凝土場

台南市永康區興工路20號
No.20, Xinggong Rd., Yongkang Dist., Tainan City 710, Taiwan
電話：(06)233-6052 傳真：(06)233-6106

大湖預拌混凝土場

高雄市路竹區甲南里環球路461-1號
No.461-1, Huanqiu Rd., Luzhu Dist., Kaohsiung City 821, Taiwan
電話：(07)696-5131 傳真：(07)696-1220

小港預拌混凝土場

高雄市小港區沿海三路20號
No.20, Yanhai 3rd Rd., Xiaogang Dist., Kaohsiung City 812, Taiwan
電話：(07)871-3143 傳真：(07)871-5594

楠梓預拌混凝土場

高雄市燕巢區鳳凰里鳳龍巷58號
No.58, Fenglong Ln., Yanchao Dist., Kaohsiung City 824, Taiwan
電話：(07)615-3190 傳真：(07)615-3186

鳳山預拌混凝土場

高雄市大寮區中庄里鳳屏一路146號
No.146, Fengping 1st Rd., Daliao Dist., Kaohsiung City 831, Taiwan
電話：(07)703-7512 傳真：(07)703-9114

潮州預拌混凝土場

屏東縣潮州鎮光復路1段53號
No.53, Sec. 1, Guangfu Rd., Chaozhou Township, Pingtung County 920, Taiwan
電話：(08)788-9945 傳真：(08)788-9906

電子業 Microelectronics Industry

新北辦公室 新北市中和區建康路6號8樓
8F., No.6, Jiankang Rd., Zhonghe Dist., New Taipei City 235, Taiwan
電話：(02)2225-2018 傳真：(02)2225-2056

高雄廠 高雄市路竹區環球路461號

No.461, Huanqiu Rd., Luzhu Dist., Kaohsiung City 821, Taiwan
電話：(07)696-2131 傳真：(07)696-5587

建材業 Construction Materials Industry

環球混凝土工業股份有限公司

Universal Concrete Industrial Corporation
烏日廠：台中市烏日區中山路一段665號
電話：(04)2337-2111
傳真：(04)2337-7829

台南混凝土工業股份有限公司

Tainan Concrete Industrial Corporation

中聯資源股份有限公司

China Hi-ment Corporation

水泥貿易業 Cement trade Industry

環中國際股份有限公司

Huang Chung Cement International Corporation.

運輸業 Transportation Industry

高雄碼頭通運股份有限公司

Kaohsiung Harbor Transport Company

汽車零件業 Auto Parts Industry

六和機械股份有限公司

Lio-Ho Machine Works, LTD.

金融業 Financial Industry

萬通票券金融股份有限公司

Grand Bills Finance Corporation

關係企業 Affiliated Company

台南紡織股份有限公司

Tainan Spinning Corporation Ltd.

太子建設股份有限公司

Prince Housing & Development Corporation.

統一企業股份有限公司

Uni-President Corporation Ltd.

統一超商股份有限公司

President Chain Store Corporation.

UCCTW

環球水泥股份有限公司

合併2019年Q2(CPA)

營運概況

For the year ended Jun. 30, 2019 and 2018

合併營運表現

(In NT thousands except otherwise noted)

	1H/19	YoY	2Q/19	YoY	1Q/19	YoY	2018
Net Sales(營業收入)	2,381,467	3%	1,194,171	4%	1,187,296	2%	4,780,994
Gross Profit (營業毛利)	230,978	-13%	124,558	-2%	106,420	-23%	571,082
Gross Margin(毛利率)	9.70%	-1.76%	10.43%	-0.60%	8.96%	-2.92%	11.94%
Operating Income(營業淨利)	29,305	-59%	19,182	-13%	10,123	-80%	182,646
Non-operating Income/(Expense)(營業外收支)	447,907	10%	300,675	-32%	147,232	477%	945,220
Income before Tax(稅前淨利)	477,212	0%	319,857	-32%	157,355	1414%	1,127,866
Income Tax Benefit/(Expense)(所得稅費用)	(17,900)	-74%	(17,146)	-72%	(754)	-91%	(76,298)
Net Income(本期淨利)	459,312	12%	302,711	-25%	156,601	6524%	1,051,568
Basic EPS(NT\$)	0.70	11%	0.46	-27%	0.24	4640%	1.62

All data from Consolidated Financial Statements reviewed by CPA